

REVOLUTIONARY BLADE LIFEPO4 CELLS



SAFEST LITHIUM CELLS IN THE INDUSTRY

INTRODUCING THE

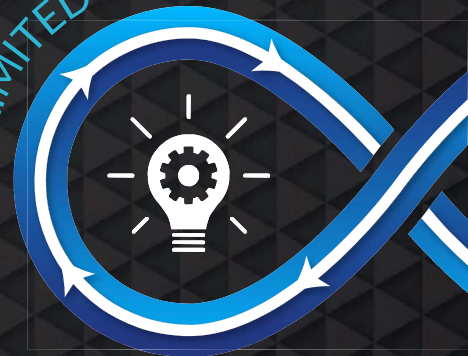
BLADE

51.2V 10KW 7KWH

V1.2

- ✓ Smart LED Status Bar
- ✓ High cycle and service life
- ✓ Internet enabled cloud monitoring
- ✓ Firmware updates over the internet
- ✓ 1.5C Industry leading battery performance
- ✓ 16 Cell LiFePO4 Graphite Blade battery system
- ✓ Includes wall-mount brackets for easy wall mounting
- ✓ Internal wiring cable compartment for safer and easier installs
- ✓ Parallel up to 15 batteries with full communications and monitoring
- ✓ CAN Bus fully intergrates and communicates with leading inverter brands

UNLIMITED CYCLES



TECHNICAL DATA

ITEM	SPECIFICATIONS
Model	Blade
Rated Capacity (5HR)	137 Ah
Nominal Voltage	51.2 V
Discharge Cutoff Voltage	44.8 V
Equalized Charge Voltage	55.8 V
Max. Continuous Charging Current	140 A
Max. Continuous Discharging Current	200 A
C Rating	1.5 C
Depth of Discharge	100%
Weight	Approx. 64 Kg
Monitoring	Wi-fi enabled remote monitoring
Parallel	Parallel connection up to 15 packs with full communications
Dimensions (WxDxH) mm	1125mm x 175mm x 340mm
Ports	1x CAN-bus, 2x Battery Link Ports, 1x Axpert Inverter Port
Cells	16 Cells, New Li-ion LiFePO4 Blade Prismatic Cells
Design Life	+/- 15 Years
Cycle Life @ 1C	Unlimited cycles within the Hubble Lithium 10 year warranty. Ts & Cs Apply.
Certification	CE, UN38.3
Outer Package Material	White bake lacquer steel case
Operating Temperature	Charging: -20°C to +55°C Discharging: -30 to +55°C Storage: -30 to +55°C
Protection	Electronic Circuit Breaker, BMS Over/Under Voltage Protection, Current Limiting

*Due to continuous product improvements specifications are subject to change without prior notice.

**To prolong battery life the recommended charging current is 50 A.



www.hubblelithium.com

